

# \$257,000 - 108 Moberly Road, Grande Cache

---

MLS® #A2212853

## \$257,000

4 Bedroom, 4.00 Bathroom, 1,502 sqft

Residential on 0.28 Acres

NONE, Grande Cache, Alberta

Perfect starter home which allows you to grow your family, plus have the ability to supplement your mortgage payments. This home has 3 good sized bedrooms and 2.5 bathrooms on the first 2 floors. The basement suite, with its own comes with 1 bedroom, 1 bathroom, full kitchen and living space.

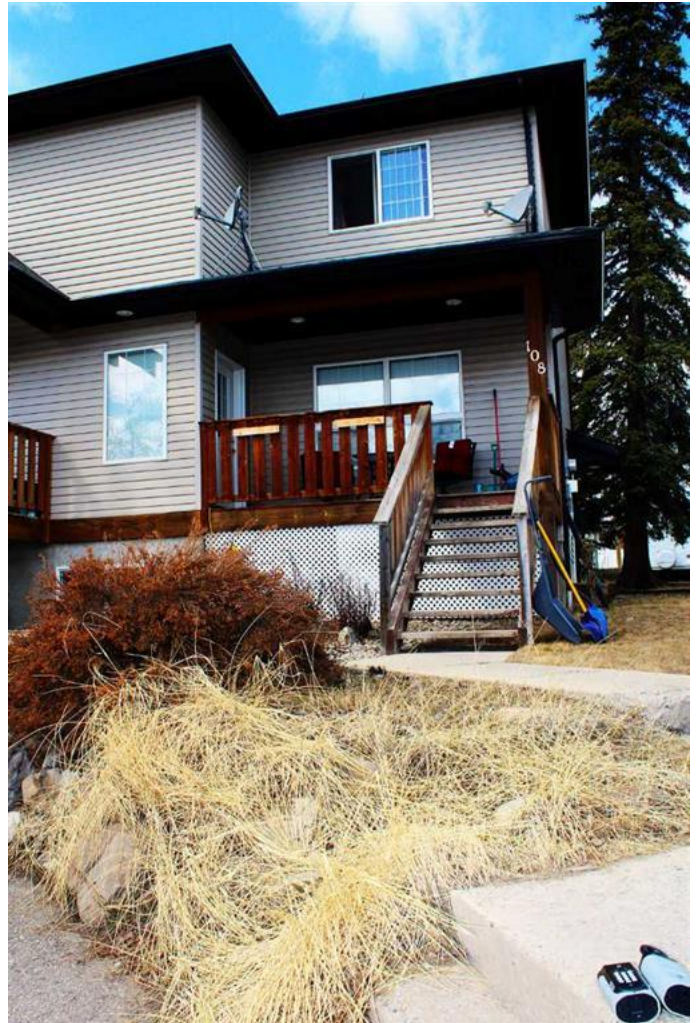
Built in 2005

### Essential Information

MLS® #	A2212853
Price	\$257,000
Bedrooms	4
Bathrooms	4.00
Full Baths	3
Half Baths	1
Square Footage	1,502
Acres	0.28
Year Built	2005
Type	Residential
Sub-Type	Semi Detached
Style	2 Storey, Side by Side
Status	Active

### Community Information

Address	108 Moberly Road
Subdivision	NONE
City	Grande Cache
County	Greenview No. 16, M.D. of



Province Alberta  
Postal Code T0E 0Y0

### Amenities

Parking Spaces 3  
Parking Off Street

### Interior

Interior Features Kitchen Island  
Appliances Dishwasher, Dryer, Elect  
Washer/Dryer Stacked  
Heating Forced Air  
Cooling None  
Fireplace Yes  
# of Fireplaces 1  
Fireplaces Gas  
Has Basement Yes  
Basement Exterior Entry, Finished, Full,

### Exterior

Exterior Features None  
Lot Description Back Yard  
Roof Asphalt Shingle  
Construction Vinyl Siding  
Foundation Poured Concrete

### Additional Information

Date Listed April 16th, 2025  
Days on Market 3  
Zoning RE

### Listing Details

Listing Office 2% Realty Edge AB

Data is supplied by Pillar 9â„¢ MLSÂ® System. Pillar 9â„¢ is the owner of the copyright in its MLSÂ® System. Data is deemed reliable but is not guaranteed accurate by Pillar 9â„¢. The trademarks MLSÂ®, Multiple Listing ServiceÂ® and the associated logos are owned by The Canadian Real Estate Association (CREA) and identify the quality of services provided by real estate professionals who are members of CREA. Used under license.

