

# \$1,823,200 - 4, 149 Stone Creek Road, Canmore

MLS® #A2212651

**\$1,823,200**

3 Bedroom, 3.00 Bathroom, 2,128 sqft

Residential on 0.14 Acres

Silvertip, Canmore, Alberta

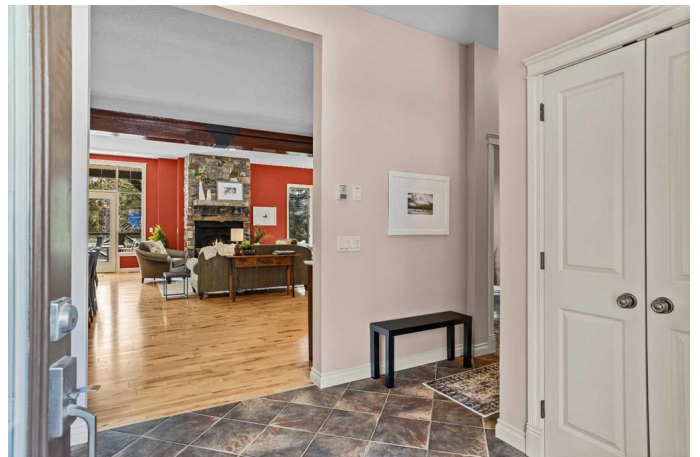
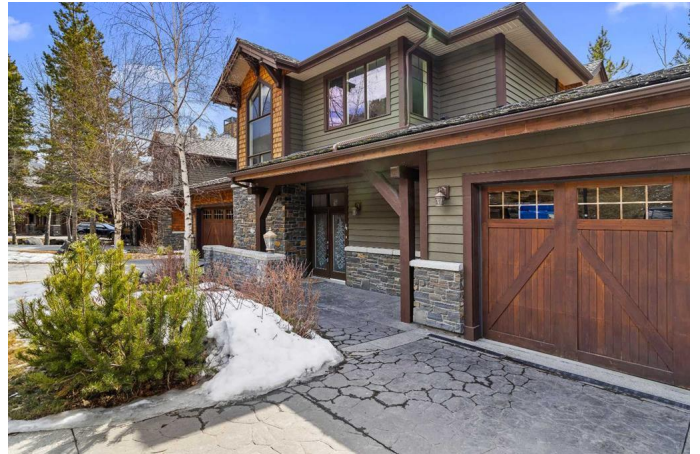
OPEN HOUSE: Saturday, April 19th,  
11amâ€“2pm

Rare Privilege: Where Serenity and Prestige  
Converge at Silvertip's Edge

For the first time since its construction in 2003, this remarkable 3,000+ sq ft southwest-facing end-unit townhome comes to market. Perfectly positioned on one of Silvertip's most coveted lots, this home sits at the peaceful terminus of Stone Creek Roadâ€”where manicured golf greens give way to untamed wilderness. Elevated among the trees and overlooking the 9th tee of Silvertip Golf Course, the setting is nothing short of breathtaking.

From the moment you arrive, a deep sense of calm takes hold- an atmosphere cherished by the original owners for over two decades. The main floor of this two-story walkout is anchored by a grand Rundlestone fireplace, with expansive windows that dissolve the boundary between refined interior living and the majestic alpine surroundings. The open-concept kitchen and dining area are designed for effortless entertaining, with uninterrupted views of Canmore's iconic south range and valley below. A window-wrapped office provides an inspiring workspace where the natural world fuels focus and creativity.

Upstairs, a tranquil rec area gazes over a



meandering creek bed toward the mountains, accompanied by two spacious bedrooms and two bathrooms, including a primary retreat featuring a private balcony with elevated mountain views and an elegant ensuite complete with a steam shower, adding spa like comfort to everyday living.

The walkout lower level includes a third bedroom and a generous unfinished space with potential for a fourth bedroom and media area, with large windows and direct patio access that ensure the space remains bright and inviting. With in-floor heating already roughed in, it's ready for your custom vision.

As the premier end-unit in this exclusive enclave, where the comforts of community subtly give way to the quiet of nature—this property offers an unmatched fusion of privacy, beauty, and timeless design. A rare opportunity to own a home that so seamlessly blends architectural intention with mountain serenity, creating a truly elevated lifestyle experience.

Built in 2003

**Essential Information**

MLS® #	A2212651
Price	\$1,823,200
Bedrooms	3
Bathrooms	3.00
Full Baths	2
Half Baths	1
Square Footage	2,128
Acres	0.14
Year Built	2003
Type	Residential
Sub-Type	Row/Townhouse

Style	2 Storey
Status	Active

### Community Information

Address	4, 149 Stone Creek Road
Subdivision	Silvertip
City	Canmore
County	Bighorn No. 8, M.D. of
Province	Alberta
Postal Code	T1W 3A6

### Amenities

Amenities	None
Parking Spaces	4
Parking	Double Garage Attached
# of Garages	2

### Interior

Interior Features	Central Vacuum, Kitchen Island, Natural Woodwork, Open Floorplan
Appliances	Dishwasher, Dryer, Electric Oven, Electric Stove, Microwave, Refrigerator, Washer
Heating	In Floor Roughed-In, Forced Air
Cooling	None
Fireplace	Yes
# of Fireplaces	1
Fireplaces	Gas, Living Room, Stone
Has Basement	Yes
Basement	Full, Partially Finished

### Exterior

Exterior Features	Balcony, BBQ gas line
Lot Description	Low Maintenance Landscape, No Neighbours Behind, On Golf Course, Private, Treed, Views
Roof	Cedar Shake
Construction	Stone, Wood Frame
Foundation	Poured Concrete

### Additional Information

Date Listed	April 17th, 2025
-------------	------------------

Days on Market	3
Zoning	Res 4 Plex

**Listing Details**

Listing Office	MaxWell Capital Realty
----------------	------------------------

Data is supplied by Pillar 9â„¢ MLS® System. Pillar 9â„¢ is the owner of the copyright in its MLS® System. Data is deemed reliable but is not guaranteed accurate by Pillar 9â„¢. The trademarks MLS®, Multiple Listing Service® and the associated logos are owned by The Canadian Real Estate Association (CREA) and identify the quality of services provided by real estate professionals who are members of CREA. Used under license.