

\$495,000 - On Highway 56, Rural Stettler No. 6, County of

MLS® #A2211697

\$495,000

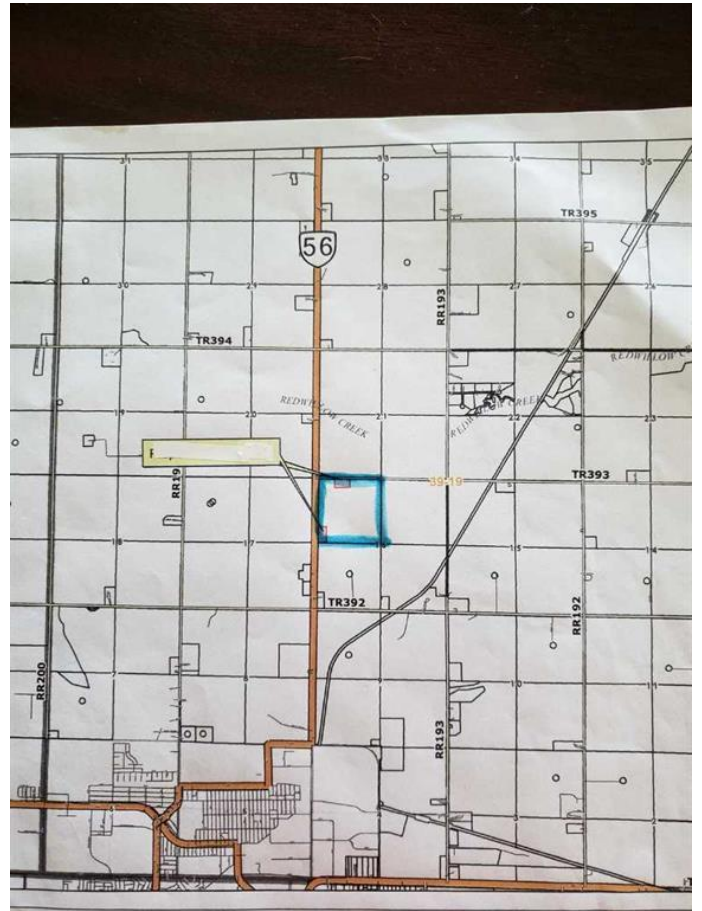
0 Bedroom, 0.00 Bathroom,
Land on 154.00 Acres

NONE, Rural Stettler No. 6, County of, Alberta

Visit REALTOR® website for additional information 155 Acres of Versatile Farmland Just North of Stettler. This property offers a prime mix of cultivated land & native pasture, just 2 miles north of Stettler with direct access off paved Highway 56. Roughly 100 acres are currently seeded to hay, alfalfa, & grassâ€”well-suited for forage production or rotational cropping. The land has previously supported barley, offering flexibility for future use. The remaining 56 acres feature native pasture with a large dugoutâ€”ideal for grazing livestock or recreational use. The property includes a 6-acre subdivision on the southwest side, offering potential for a future building site. Power is available on the north side of the quarter, & the neighboring wells show there is a good water supply. Whether youâ€™re expanding your operation, building your dream home, this parcel checks all the boxes.

Essential Information

MLS® #	A2211697
Price	\$495,000
Bathrooms	0.00
Acres	154.00
Type	Land
Sub-Type	Residential Land
Status	Active



Community Information

Address	On Highway 56
Subdivision	NONE
City	Rural Stettler No. 6, County of
County	Stettler No. 6, County of
Province	Alberta
Postal Code	T4G 0J2

Additional Information

Date Listed	April 16th, 2025
Days on Market	4
Zoning	AG

Listing Details

Listing Office	PG Direct Realty Ltd.
----------------	-----------------------

Data is supplied by Pillar 9â„¢ MLS® System. Pillar 9â„¢ is the owner of the copyright in its MLS® System. Data is deemed reliable but is not guaranteed accurate by Pillar 9â„¢. The trademarks MLS®, Multiple Listing Service® and the associated logos are owned by The Canadian Real Estate Association (CREA) and identify the quality of services provided by real estate professionals who are members of CREA. Used under license.