

\$310,572 - 32, 200 Legacy Lane, Rimbey

MLS® #A2201547

\$310,572

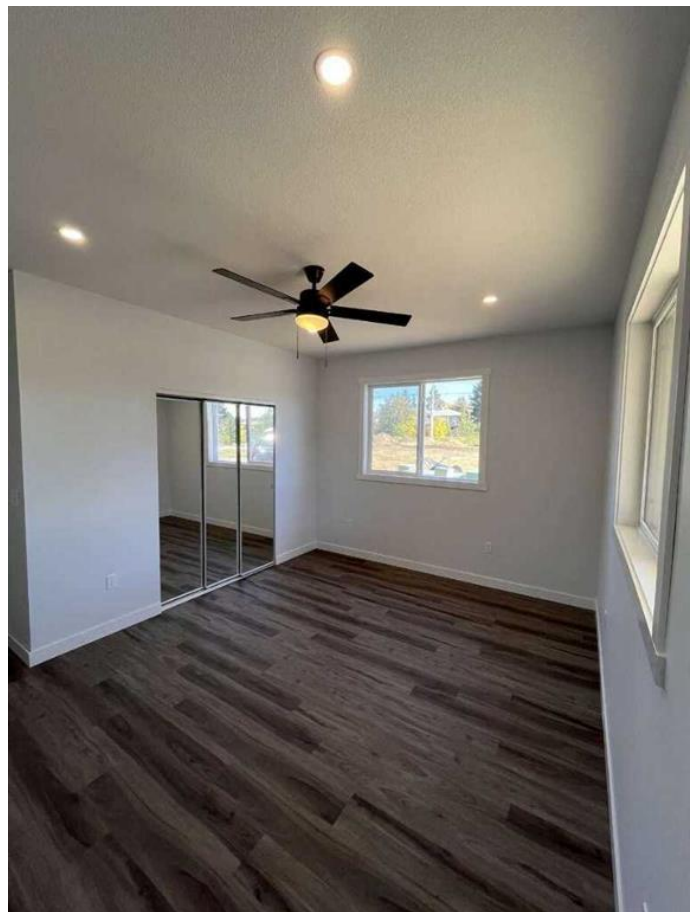
2 Bedroom, 2.00 Bathroom, 1,184 sqft

Residential on 0.04 Acres

NONE, Rimbey, Alberta

For more information, please click Brochure button.

Introducing a stunning opportunity at 32, 200 Legacy Lane, Rimbey, Alberta - a brand-new, move-in-ready condo that's sure to impress! This beautifully designed, single-level home offers a bright and spacious layout with no stairs, making it an ideal choice for easy, comfortable living. Nestled in a welcoming senior condominium development, this property combines modern convenience with the charm of small-town life in Rimbey, a picturesque community brimming with all the amenities you need. Step inside this thoughtfully crafted condo, featuring two generous bedrooms and 1.5 well-appointed bathrooms - perfect for retirees, downsizers, or anyone seeking low-maintenance living. The open, airy interior is flooded with natural light, creating a warm and inviting atmosphere. A standout feature is the attached heated garage, providing year-round comfort and convenience, especially during Alberta's chilly winters. Plus, there's an additional parking space for guests or a second vehicle, ensuring ample room for your needs. Location is everything, and this condo delivers. Situated along Rimbey's main street, it's directly across from the hospital - offering peace of mind and easy access to healthcare. You're also steps away from local shops, restaurants, and services, all wrapped in the beauty of a tight-knit small town. Whether you're enjoying a coffee downtown or a



stroll through the community, Rimbey's friendly vibe shines through. This property's central location is a gateway to adventure: just an hour from Edmonton and Red Deer for urban outings, and within a 30-minute drive of Sylvan Lake, Ponoka, Lacombe, and Rocky Mountain House for weekend getaways or outdoor fun. Yet, you'll love returning to the tranquility of Legacy Lane. Built with quality and care, this condo is ready for you to make it your own - no renovations, no hassles, just a fresh start. Perfect for seniors or anyone craving a low-maintenance lifestyle, 32, 200 Legacy Lane offers the best of both worlds: modern living in a serene, amenity-rich town.

Built in 2024

Essential Information

MLS® #	A2201547
Price	\$310,572
Bedrooms	2
Bathrooms	2.00
Full Baths	1
Half Baths	1
Square Footage	1,184
Acres	0.04
Year Built	2024
Type	Residential
Sub-Type	Row/Townhouse
Style	Townhouse
Status	Active

Community Information

Address	32, 200 Legacy Lane
Subdivision	NONE
City	Rimbey
County	Ponoka County
Province	Alberta

Postal Code	T0C 2J0
Amenities	
Amenities	Parking
Parking Spaces	2
Parking	Parking Pad, Single Garage /
# of Garages	1
Interior	
Interior Features	Ceiling Fan(s), High Ceilings, Smoking Home, Open Floor Plan, Entrance, Tankless Hot Water
Appliances	None
Heating	Boiler, Make-up Air, Natural Gas
Cooling	None
Basement	None
Exterior	
Exterior Features	Lighting, Private Entrance, Rain Gutters
Lot Description	Zero Lot Line
Roof	Asphalt Shingle
Construction	Vinyl Siding
Foundation	ICF Block



Additional Information

Date Listed	March 11th, 2025
Days on Market	44
Zoning	R3

Listing Details

Listing Office	Easy List Realty
----------------	------------------

Data is supplied by Pillar 9â„¢ MLSÂ® System. Pillar 9â„¢ is the owner of the copyright in its MLSÂ® System. Data is deemed reliable but is not guaranteed accurate by Pillar 9â„¢. The trademarks MLSÂ®, Multiple Listing ServiceÂ® and the associated logos are owned by The Canadian Real Estate Association (CREA) and identify the quality of services provided by real estate professionals who are members of CREA. Used under license.