

\$204,900 - 705 Terrace Park, Red Deer

MLS® #A2200948

\$204,900

3 Bedroom, 2.00 Bathroom, 1,121 sqft
Residential on 0.06 Acres

Eastview, Red Deer, Alberta

EXPERIENCE this 2 storey style townhouse home with no condo fees! The main floor has a good sized living room with kitchen and dining room area. The upper floor has a 4 piece bathroom, 2 bedrooms, plus a primary bedroom. The basement is finished with a flex room, 3 piece bathroom and a laundry room, both the washer and dryer are included. There is a private backyard, fenced and landscaped and a parking pad at the rear for 2 vehicles. This home is located in SE Red Deer, close to shopping amenities.

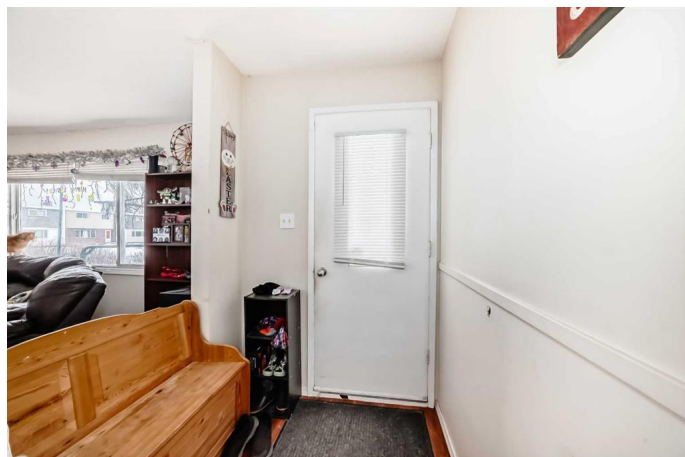
Built in 1961

Essential Information

MLS® #	A2200948
Price	\$204,900
Bedrooms	3
Bathrooms	2.00
Full Baths	2
Square Footage	1,121
Acres	0.06
Year Built	1961
Type	Residential
Sub-Type	Row/Townhouse
Style	2 Storey
Status	Active

Community Information

Address 705 Terrace Park



Subdivision	Eastview
City	Red Deer
County	Red Deer
Province	Alberta
Postal Code	T4N 1V8

Amenities

Parking Spaces	2
Parking	Off Street, Parking Pad

Interior

Interior Features	Laminate Counters
Appliances	Electric Stove, Refrigerator, Washer/Dryer
Heating	Forced Air
Cooling	None
Has Basement	Yes
Basement	Finished, Full

Exterior

Exterior Features	None
Lot Description	Back Lane, Back Yard, Front Yard, Landscaped, Level
Roof	Asphalt Shingle
Construction	Vinyl Siding
Foundation	Poured Concrete

Additional Information

Date Listed	March 31st, 2025
Days on Market	22
Zoning	R3

Listing Details

Listing Office	Realty Experts Group Ltd
----------------	--------------------------

Data is supplied by Pillar 9â„¢ MLSÂ® System. Pillar 9â„¢ is the owner of the copyright in its MLSÂ® System. Data is deemed reliable but is not guaranteed accurate by Pillar 9â„¢. The trademarks MLSÂ®, Multiple Listing ServiceÂ® and the associated logos are owned by The Canadian Real Estate Association (CREA) and identify the quality of services provided by real estate professionals who are members of CREA. Used under license.