

\$2,800,000 - 232 8a Street Ne, Calgary

MLS® #A2189062

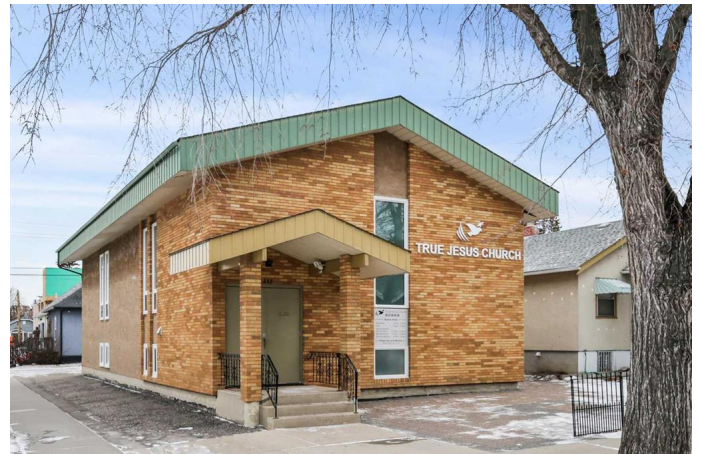
\$2,800,000

0 Bedroom, 0.00 Bathroom,
Commercial on 0.11 Acres

Bridgeland/Riverside, Calgary, Alberta

CHURCH BUILDING For Sale on Calgary's inner-city corner lot! Nestled in the heart of desirable Bridgeland, this well kept church property offers everything your congregation needs for worship and community. Set on a 44 ft x 110 ft lot, this property offers vast opportunities for future expansion and outdoor events, creating a welcoming environment for your congregation to connect and thrive. Approximate seating capacity 120, Building size 3400 SqFt - inclusive of main floor 1712 SqFt and basement 1688 SqFt. The spacious worship area on the main floor is beautifully illuminated by large windows that flood the space with natural light. Adjacent to the worship area, the inviting lobby provides additional seating for the congregation. The church building also features a versatile dining area and three rooms in the basement, ideal for classrooms, offices, or even a nursery room. The modernized kitchen and two washrooms in the basement offer added convenience and functionality for your ministry's needs.

This rare find church property offers the perfect location, with everything you need just moments away! Enjoy easy access to a wide variety of restaurants, cafe, shops, services, and more. Murdoch Park is just a five-minute walk, providing a lovely spot to relax and enjoy the outdoors, and Riverside School is nearby. Public transit is effortless, with bus stops and the LRT station close by. Quick access to Memorial Drive, Edmonton Trail, and Deerfoot



Trail ensures seamless commuting to major parts of the city, with downtown only a five-minute drive away. Don't miss the chance to own this beautiful, well-located property – perfect for worship, community, or future development with endless possibilities!

*Please note that Seller is also selling the residential property next door 230 8A Street NE listed separately on MLS (A2188761) for \$750,000.

Built in 1977

Essential Information

MLS® #	A2189062
Price	\$2,800,000
Bathrooms	0.00
Acres	0.11
Year Built	1977
Type	Commercial
Sub-Type	Mixed Use
Status	Active

Community Information

Address	232 8a Street Ne
Subdivision	Bridgeland/Riverside
City	Calgary
County	Calgary
Province	Alberta
Postal Code	T2E 4J1

Interior

Heating	Forced Air, Natural Gas
Cooling	Central Air

Exterior

Lot Description	Back Lane, Corner Lot, Level, Street Lighting, Treed
Roof	Asphalt Shingle

Construction	Brick, Stucco, Wood Frame
Foundation	Poured Concrete

Additional Information

Date Listed	January 21st, 2025
Days on Market	91
Zoning	DC

Listing Details

Listing Office	First Place Realty
----------------	--------------------

Data is supplied by Pillar 9â„¢ MLSÂ® System. Pillar 9â„¢ is the owner of the copyright in its MLSÂ® System. Data is deemed reliable but is not guaranteed accurate by Pillar 9â„¢. The trademarks MLSÂ®, Multiple Listing ServiceÂ® and the associated logos are owned by The Canadian Real Estate Association (CREA) and identify the quality of services provided by real estate professionals who are members of CREA. Used under license.