

\$289,000 - None, Rural Northern Lights, County of

MLS® #A2189023

\$289,000

0 Bedroom, 0.00 Bathroom,
Land on 160.00 Acres

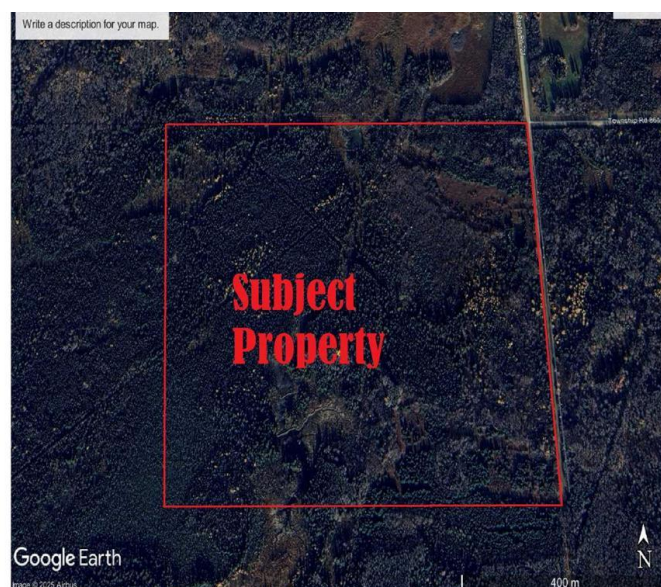
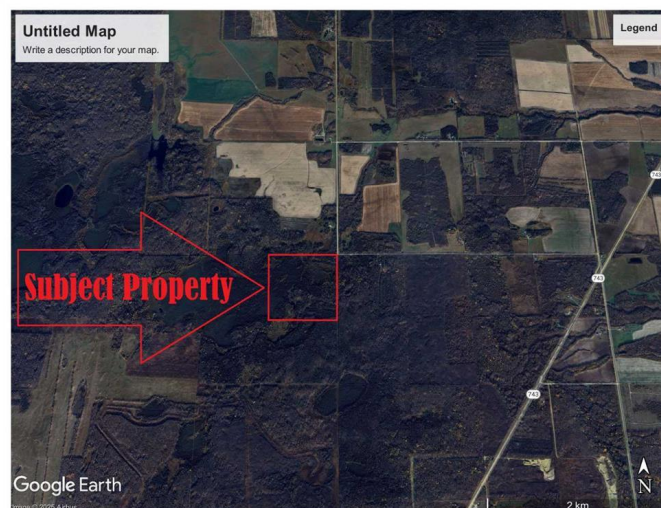
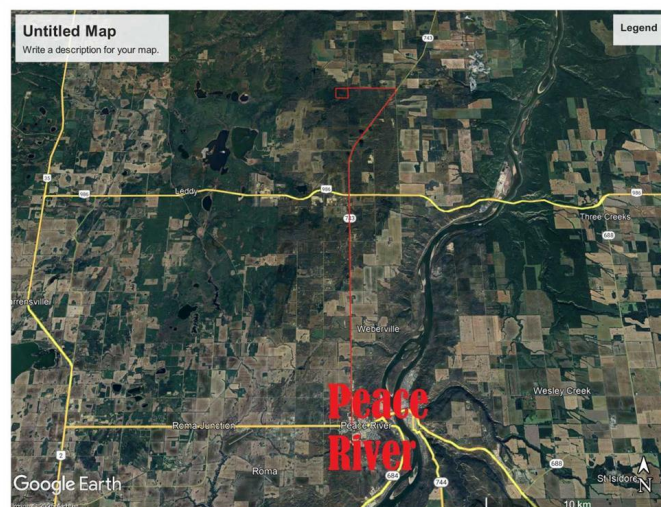
NONE, Rural Northern Lights, County of,
Alberta

Discover Your Hidden Oasis: Nature Awaits You! BUSH QUARTER only about 27 kilometers from Peace River up the Weberville road.-Could be a excellent place to build a home and live off the grid or build a cabin. Nestled in a serene landscape, this property offers the perfect retreat to unwind and recharge. Imagine waking up to the sounds of nature, surrounded by pristine wilderness, yet just a stone's throw away from essential shopping and medical facilities. Experience the thrill of hunting and outdoor adventures, or simply relax in the lap of nature. Build your own quad and sledding trails or use them for hiking and bird watching. Donâ€™t miss your chance to own a slice of paradise! Explore endless opportunities for adventure and relaxation, all while remaining within reach of civilization. Your dream getaway is just around the corner!

Contact us today to learn more about our available properties and start your journey to serenity!

Essential Information

MLS® #	A2189023
Price	\$289,000



Bathrooms	0.00
Acres	160.00
Type	Land
Sub-Type	Residential Land
Status	Active

Community Information

Address	None
Subdivision	NONE
City	Rural Northern Lights, County of
County	Northern Lights, County of
Province	Alberta
Postal Code	T8S 1K7

Additional Information

Date Listed	January 20th, 2025
Days on Market	91
Zoning	AG-1

Listing Details

Listing Office	Royal LePage Mighty Peace Realty
----------------	----------------------------------

Data is supplied by Pillar 9â„¢ MLS® System. Pillar 9â„¢ is the owner of the copyright in its MLS® System. Data is deemed reliable but is not guaranteed accurate by Pillar 9â„¢. The trademarks MLS®, Multiple Listing Service® and the associated logos are owned by The Canadian Real Estate Association (CREA) and identify the quality of services provided by real estate professionals who are members of CREA. Used under license.