

# \$1,890,000 - Pt Nw 2-50-2-w4, Rural Vermilion River, County of

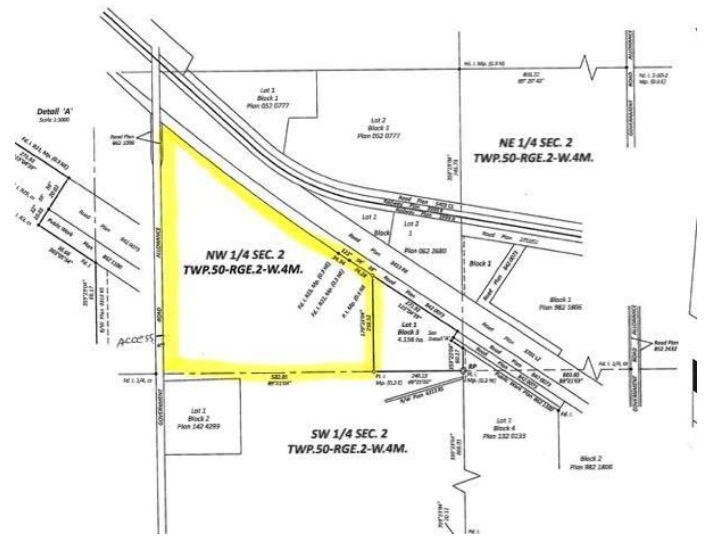
MLS® #A2177283

**\$1,890,000**

0 Bedroom, 0.00 Bathroom,  
Commercial on 63.00 Acres

NONE, Rural Vermilion River, County of,  
Alberta

Great Highway 16 exposure 9 kms west of  
Lloydminster. Your choice of 10, 63 or 73  
acres subdivided and ready for your  
development!



## Essential Information

MLS® #	A2177283
Price	\$1,890,000
Bathrooms	0.00
Acres	63.00
Type	Commercial
Sub-Type	Industrial
Status	Active

## Community Information

Address	Pt Nw 2-50-2-w4
Subdivision	NONE
City	Rural Vermilion River, County of
County	Vermilion River, County of
Province	Alberta
Postal Code	T0B 0L0

## Additional Information

Date Listed	November 4th, 2024
Days on Market	170
Zoning	AG/COM

## Listing Details

Listing Office            RE/MAX OF LLOYDMINSTER

Data is supplied by Pillar 9â,,ç MLSÂ® System. Pillar 9â,,ç is the owner of the copyright in its MLSÂ® System. Data is deemed reliable but is not guaranteed accurate by Pillar 9â,,ç. The trademarks MLSÂ®, Multiple Listing ServiceÂ® and the associated logos are owned by The Canadian Real Estate Association (CREA) and identify the quality of services provided by real estate professionals who are members of CREA. Used under license.