

# \$465,000 - On Hwy 2a, Rural Red Deer County

---

MLS® #A2149385

**\$465,000**

0 Bedroom, 0.00 Bathroom,  
Land on 88.35 Acres

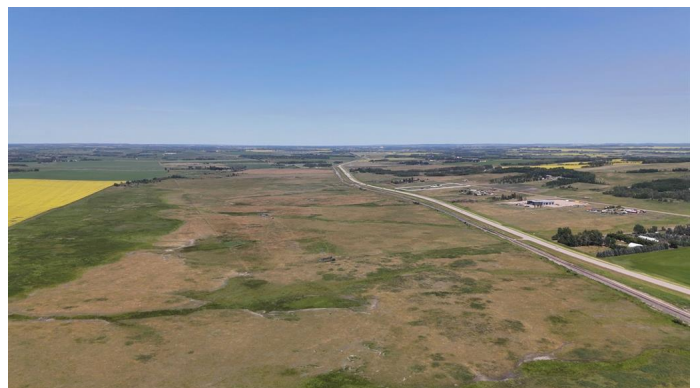
NONE, Rural Red Deer County, Alberta

This expansive 88.35+/-acre parcel, zoned for agriculture, offers a unique opportunity for farmers, investors, or developers. With its prime location just 5 minutes from Innisfail and 15 minutes from Gasoline Alley, this property combines the best of rural serenity and urban convenience.

**\*\*Property Highlights:\*\***

- **\*\*Excellent Accessibility:\*\*** Direct access from Highway 2A ensures easy transportation and logistics.
- **\*\*Vast Agricultural Potential:\*\*** Ideal for farming, ranching, or establishing a rural retreat.
- **\*\*Convenient Location:\*\*** Close proximity to Innisfail's amenities and services, with swift access to Gasoline Alley.
- **\*\*Future Growth Potential:\*\*** Located in a rapidly developing region, offering significant future appreciation prospects.

Don't miss out on this exceptional opportunity to own a substantial piece of agricultural land in a highly sought-after area. Contact your realtor today for more information or to schedule a viewing!



## Essential Information

MLS® #	A2149385
Price	\$465,000

Bathrooms	0.00
Acres	88.35
Type	Land
Sub-Type	Residential Land
Status	Active

### Community Information

Address	On Hwy 2a
Subdivision	NONE
City	Rural Red Deer County
County	Red Deer County
Province	Alberta
Postal Code	T4G 0G8

### Additional Information

Date Listed	July 13th, 2024
Days on Market	282
Zoning	AG

### Listing Details

Listing Office	Royal LePage Network Realty Corp.
----------------	-----------------------------------

Data is supplied by Pillar 9â„¢ MLSÂ® System. Pillar 9â„¢ is the owner of the copyright in its MLSÂ® System. Data is deemed reliable but is not guaranteed accurate by Pillar 9â„¢. The trademarks MLSÂ®, Multiple Listing ServiceÂ® and the associated logos are owned by The Canadian Real Estate Association (CREA) and identify the quality of services provided by real estate professionals who are members of CREA. Used under license.