

\$4,800,000 - Range Road 292 W-4 R-29 T-26 S - Nw, Rural Rocky View County

MLS® #A2081159

\$4,800,000

0 Bedroom, 0.00 Bathroom,
Land on 160.00 Acres

NONE, Rural Rocky View County, Alberta

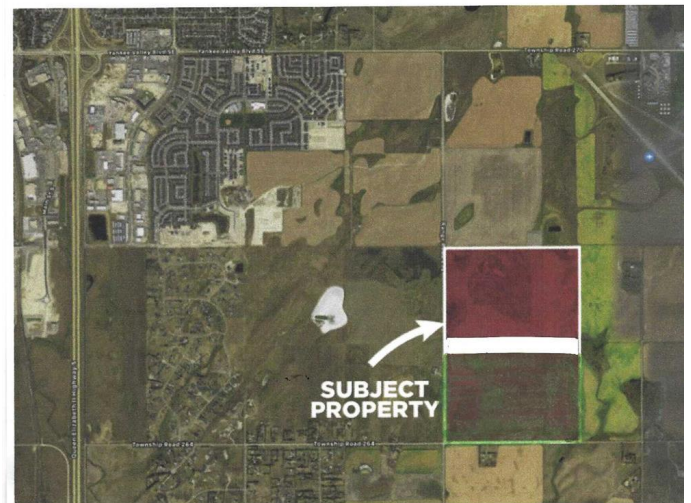
160 ACRES OR 64.7 HECTARES RAW LAND INSIDE BALZAC ANNEXATION. SOUTH EAST OF THE CITY OF AIRDRIE AND NEXT TO AIRDRIE AIRPORT. GREAT INVESTMENT LAND OR SUB-DIVISION POTENTIAL. East of Queen Elizabeth 11 Hwy - East on Township Road 270 - 1 km South on Range Road 292. South West of Airdrie Airport.- This land is extremely well situated to benefit from the expansion around it. With each major announcement, the land becomes more valuable. The MD of Rocky View has set records for development in an effort to meet strong real estate demand in the surrounding areas. Environmental Phase One & Site Plan completed

Essential Information

MLS® #	A2081159
Price	\$4,800,000
Bathrooms	0.00
Acres	160.00
Type	Land
Sub-Type	Commercial Land
Status	Active

Community Information

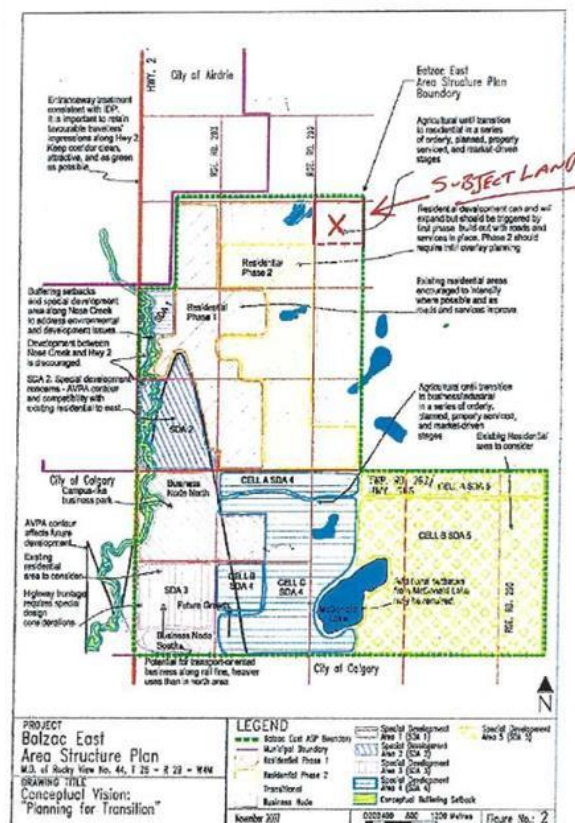
Address	Range Road 292 W-4 R-29 T-26 S - Nw
Subdivision	NONE



Balzac East Area Structure Plan

Schedule 'A' of Bylaw C-5177-2000

Figure 2: Conceptual Vision



City	Rural Rocky View County
County	Rocky View County
Province	Alberta
Postal Code	T0M0E0

Additional Information

Date Listed	September 15th, 2023
Days on Market	584
Zoning	AG

Listing Details

Listing Office	RE/MAX REALTY PROFESSIONALS
----------------	-----------------------------

Data is supplied by Pillar 9â„¢ MLS® System. Pillar 9â„¢ is the owner of the copyright in its MLS® System. Data is deemed reliable but is not guaranteed accurate by Pillar 9â„¢. The trademarks MLS®, Multiple Listing Service® and the associated logos are owned by The Canadian Real Estate Association (CREA) and identify the quality of services provided by real estate professionals who are members of CREA. Used under license.